

THIS INSTRUMENT PREPARED BY:  
MICHAEL D. ROSE, P.S.M.

SHEET 2 OF 2 SHEETS

**SDA** SHAH DROTOS & ASSOCIATES ENGINEERING SURVEYING PLANNING

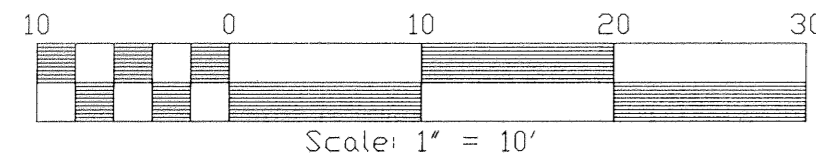
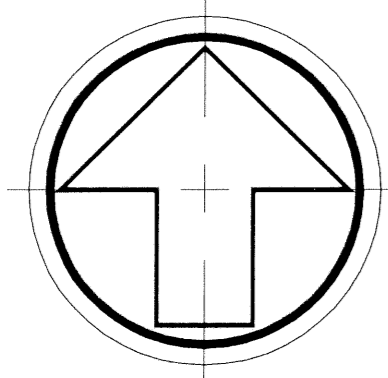
CERTIFICATE OF AUTHORIZATION NO. LB6456  
1885 W. Commercial Blvd., Suite 190 Ft. Lauderdale, Fl. 33309  
PH: 954-776-7604 FAX: 954-776-7608  
DECEMBER, 2000

# BLUE WATER TOWNHOUSES PLAT

A REPLAT OF A PORTION OF LOT 21 AND 22,  
REDHAMMER SUBDIVISION IN THE NORTHWEST ONE-QUARTER (NW1/4) OF  
FRACTIONAL SECTION 16, TOWNSHIP 47 SOUTH, RANGE 43 EAST (PB 20, PG 37, PBCR)  
CITY OF BOCA RATON, PALM BEACH COUNTY, FLORIDA

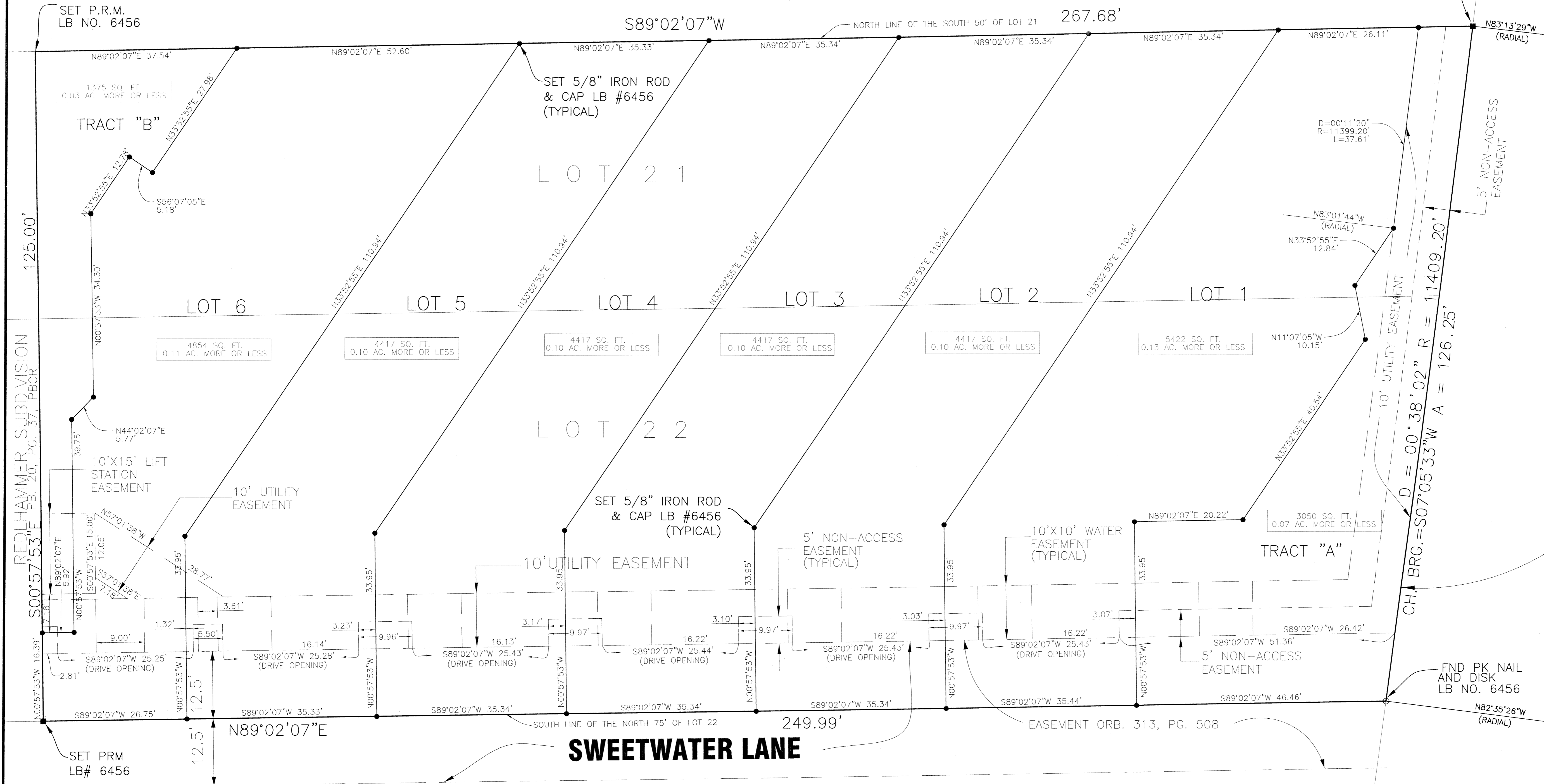
# 106

STATE OF FLORIDA  
COUNTY OF PALM BEACH  
This Plat was filed for record  
at \_\_\_\_\_ M., this \_\_\_\_\_ day  
of \_\_\_\_\_, 2000 and duly  
recorded in Plat Book No. \_\_\_\_\_  
on Pages \_\_\_\_\_ and \_\_\_\_\_  
DOROTHY H. WILKEN, CLERK  
BY: \_\_\_\_\_ DC



REDHAMMER SUBDIVISION  
PB. 20, PG. 37, PBCR

**P.O.B.**  
SET P.R.M.  
LB NO. 6456



**STATE ROAD A-1-A**  
100' RIGHT-OF-WAY  
PROJECT NO. 93060-2103

REDHAMMER SUBDIVISION  
PB. 20, PG. 37, PBCR